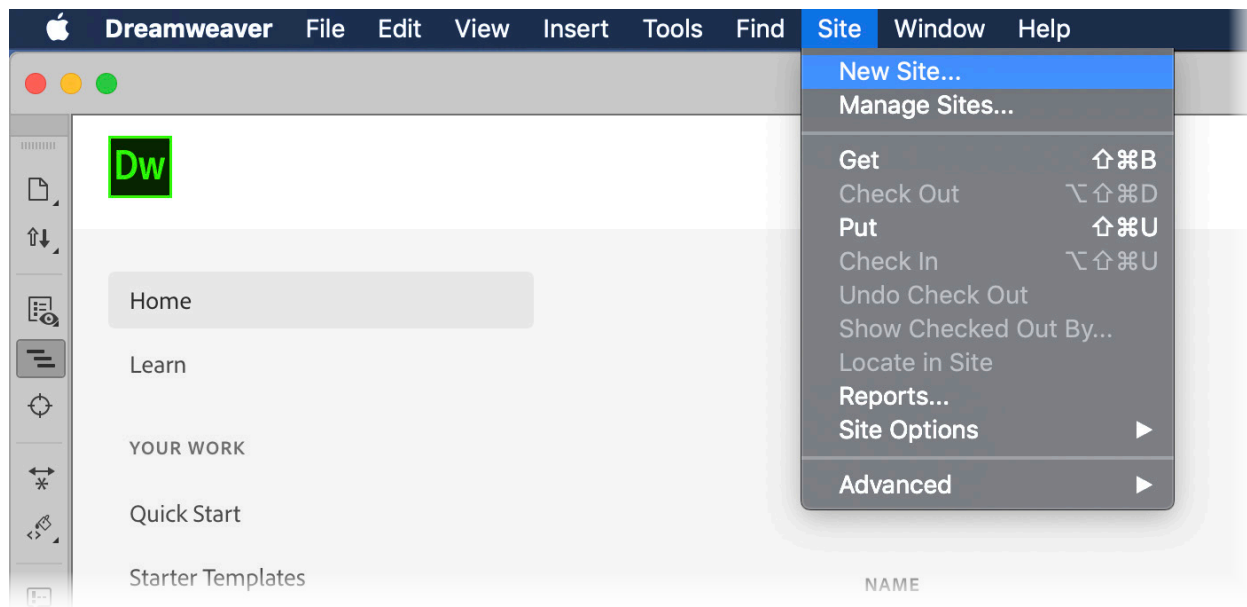


Dreamweaver Site Setup

This semester we will be using Dreamweaver for all webpage editing, and to upload webpages to the web server.

1. Copy your *LocalRootFolder* to the computer's desktop (download a new folder if this is the first setup).
2. Launch Dreamweaver (you may have to make a couple of initial selections if it has not been launched before).
3. Select the **New Site...** option under the **Site** menu.



1. Give your site a name (your name and class number would be good).
2. Click on the folder icon and select *LocalRootFolder* on the desktop.

Site Setup for MichaelH

Site

Servers

> CSS Preprocessors

> Advanced Settings

A Dreamweaver site is a collection of all of the files and assets you use in your website. A Dreamweaver site usually has two parts: a local folder on your computer where you store and work on files, and a remote folder on a server where you post the same files to the web.

Here you'll select the local folder and a name for your Dreamweaver site.

Site Name: MichaelH - MSP5

Local Site Folder: /Users/computer/Desktop/LocalRootFolder

Associate a Git Repository with this site

Initialize as a Git Repository

Clone existing Git Repository using URL:

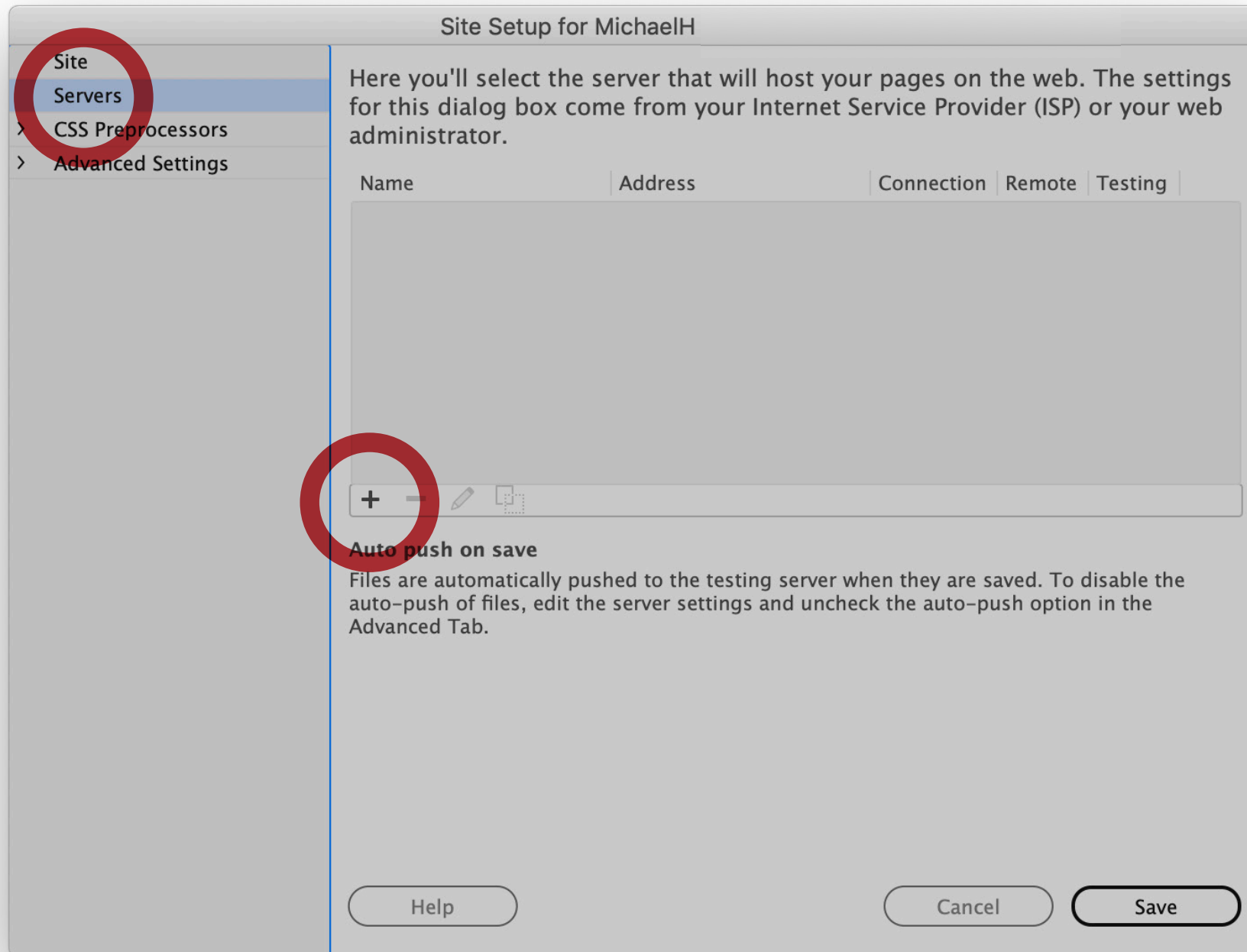
Username:

Password: Test

Save credentials

Help Cancel Save

1. Select *Servers* from the tabs on the left.
2. Click on the plus sign to add a new server.



1. Fill in the blanks as shown below.
2. Replace *hayesmi* with your Butte College email username.
3. For the password, type the word *password* followed by your Student ID number. Click **Save**.

Site Setup

Basic Advanced

Server Name: hayes.media hosting

Connect using: FTP

FTP Address: ftp.hayes.media Port: 21

Username: hayesmi@hayes.media

Password: [masked] Save

Test

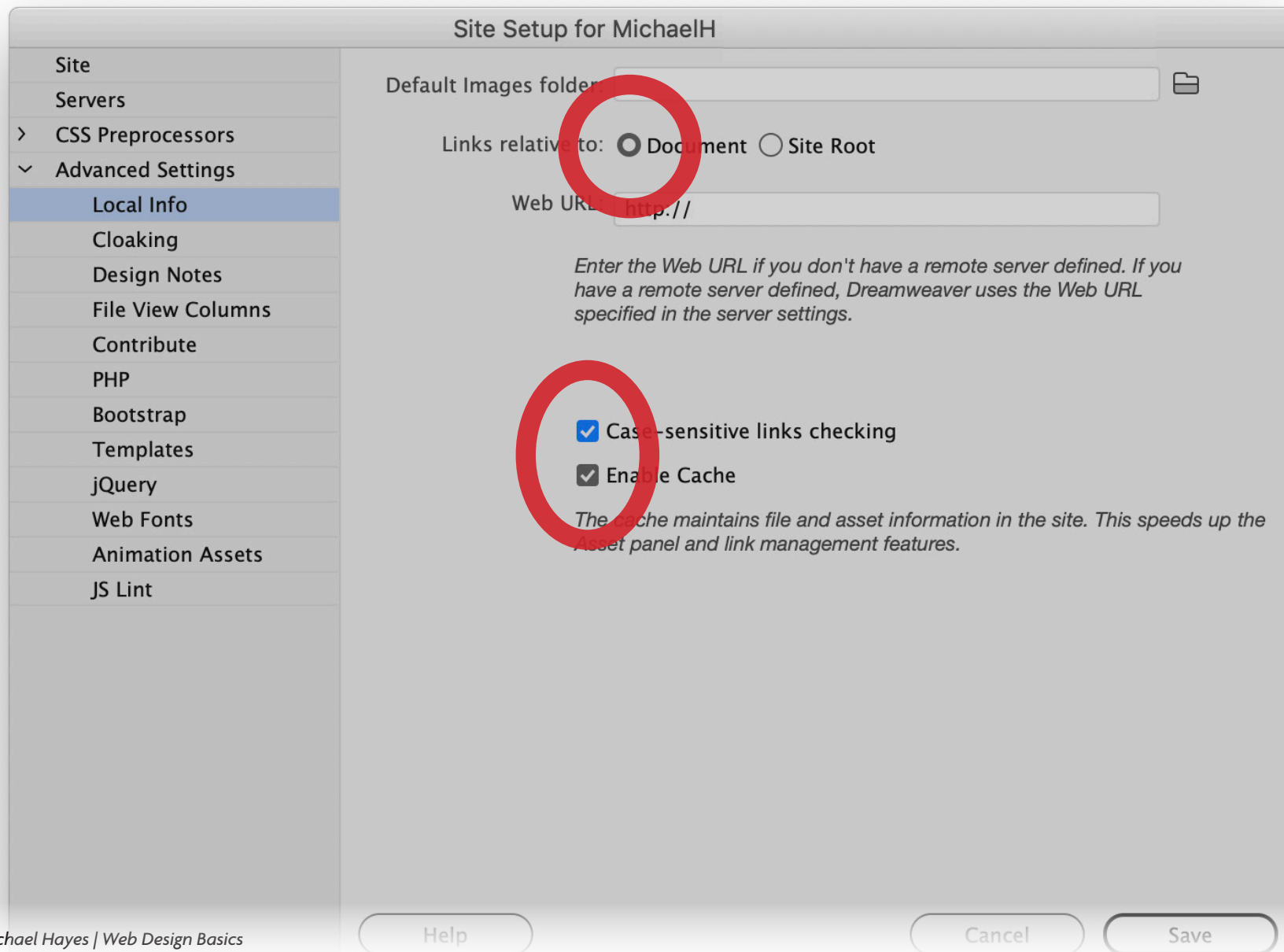
Root Directory: [empty]

Web URL: hayes.media/students/msp5/hayesmi

> More Options

Help Cancel Save

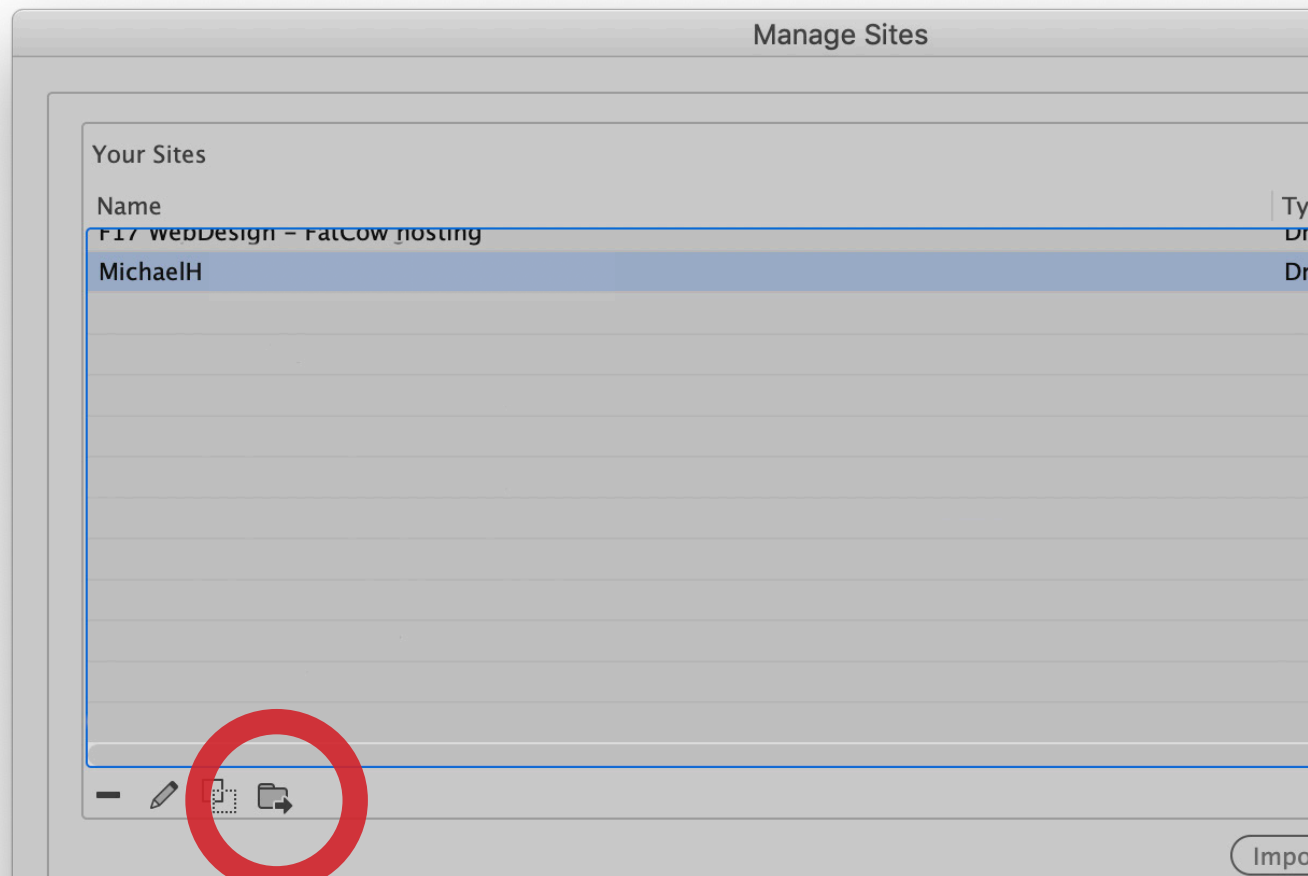
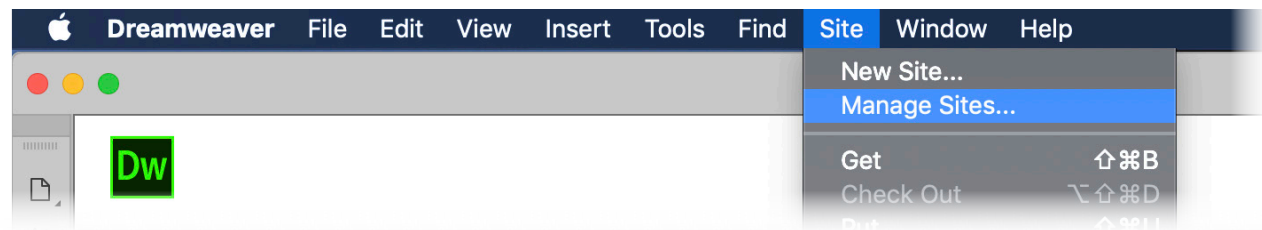
1. Select *Advanced Settings* from the tabs on the left.
2. On that screen, make sure *Document* is selected for *Links relative to*:
3. Ensure both *Case-sensitive Links checking* and *Enable Cache* are both checked. Click **Save**.



Create a Dreamweaver Site Shortcut file (.ste)

Every time you use Dreamweaver on the lab computers to work on your assignments you will need to setup your site again. Creating a Site Shortcut file will save you a lot of time.

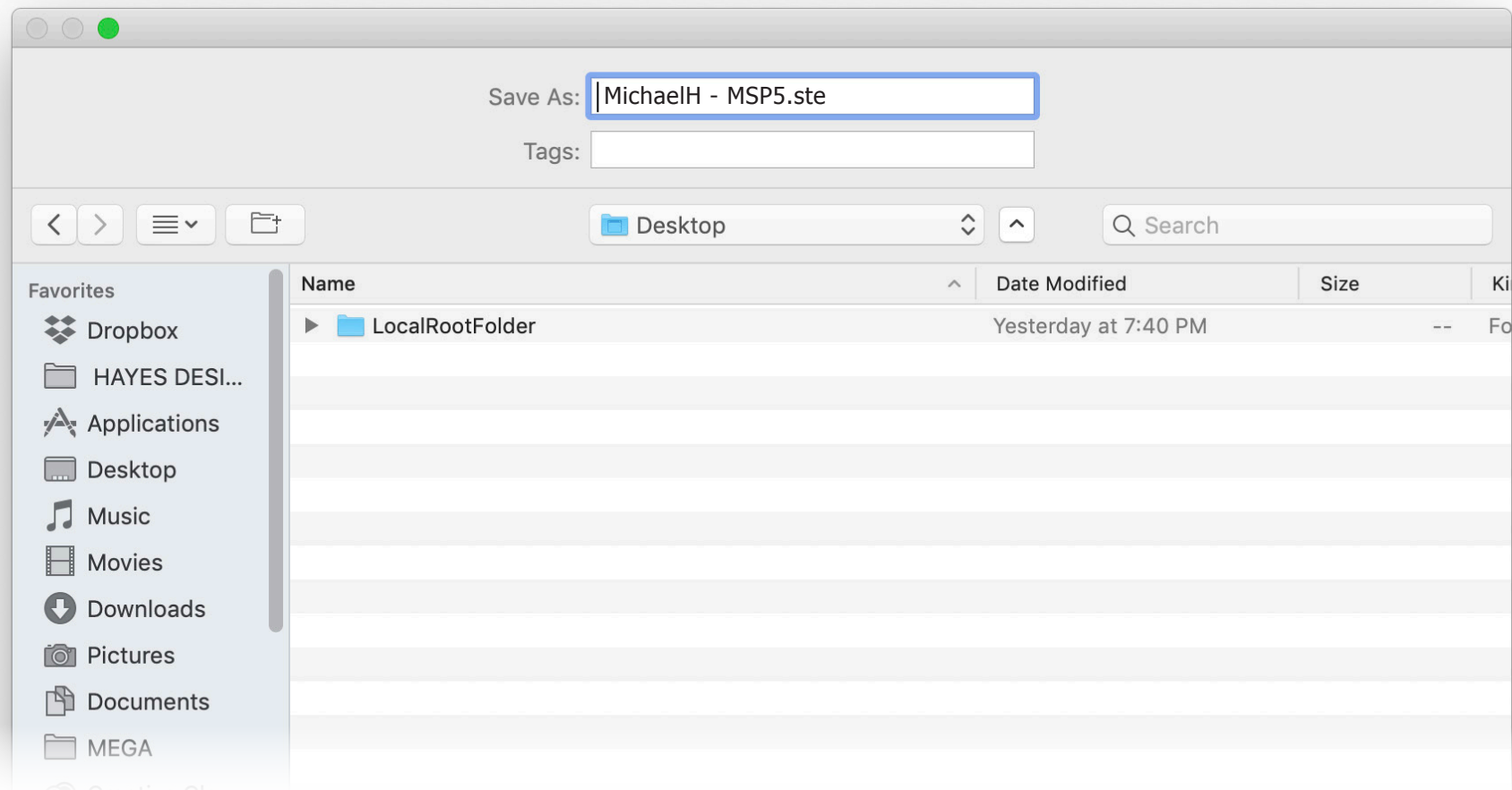
1. Select the **Manage Sites...** option under the **Site** menu.
2. Make sure you have your site selected, then click the icon that has an arrow overlapping a folder.



1. Make sure *Back up my settings* is selected.



2. Save your shortcut file to the desktop. Copy to your flash drive when done.



Using the Dreamweaver Site Shortcut file (.ste)

Every time you use Dreamweaver on the lab computers to work on your assignments you will need to setup your site again. The Site Shortcut file saves you a lot of time.

1. Copy your *LocalRootFolder* to the computer's desktop.
2. Launch Dreamweaver.
3. Double-click on your Site Shortcut file (ending in *.ste*)
4. Dreamweaver will set the site up and you can get to work...